

Sloan Lubrication Systems

SB Divider Block

SB Divider Sections

		Displacement	
		in3	cm3
• SB-D-03T	Divider Section 3T	.003	(.049)
• SB-D-06T	Divider Section 6T	.006	(.098)
• SB-D-09T	Divider Section 9T	.009	(.147)
• SB-D-12T	Divider Section 12T	.012	(.197)
• SB-D-18T	Divider Section 18T	.018	(.295)
• SB-D-24T	Divider Section 24T	.024	(.393)
• SB-D-30T	Divider Section 30T	.030	(.492)

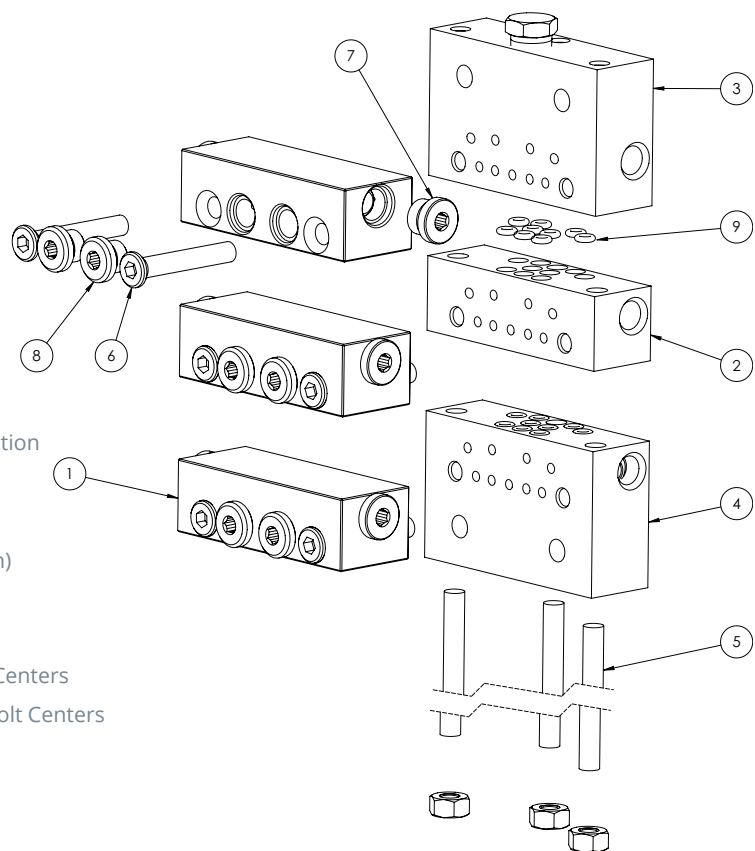


NOTE: All Divider Sections are also available with Single Outlet

T Designates Twin Outlets
S Designates a Single Outlet

Parts Breakdown

1. Divider Section	(See Front)
2. SB-D-Baseplate	Intermediate baseplate
3. SB-D-Top	Top end section
4. SB-D-Bottom	Bottom inlet section
5. SB-D-T3	Tie rod, 3-section
SB-D-T4	Tie rod, 4-section
SB-D-T5	Tie rod, 5-section
SB-D-T6	Tie rod, 6-section
SB-D-T7	Tie rod, 7-section
SB-D-T8	Tie rod, 8-section
SB-D-T9	Tie rod, 9-section
6. SB-D-SectionBolt	Plunger section bolt 2/section
7. SB-D-SP	Side section plug
8. SB-D-FP	Front section plug
9. SB-O-V006	Intermediate O-ring (Viton)



Optional Parts

• SB-D-Top-Lincoln	Top section, Lincoln Bolt Centers
• SB-D-Bottom-Lincoln	Bottom section, Lincoln Bolt Centers
• SB-D-CrossportRight	Crossport plate, right
• SB-D-CrossportLeft	Crossport plate, left
• SB-D-CrossportBoth	Crossport plate, both