

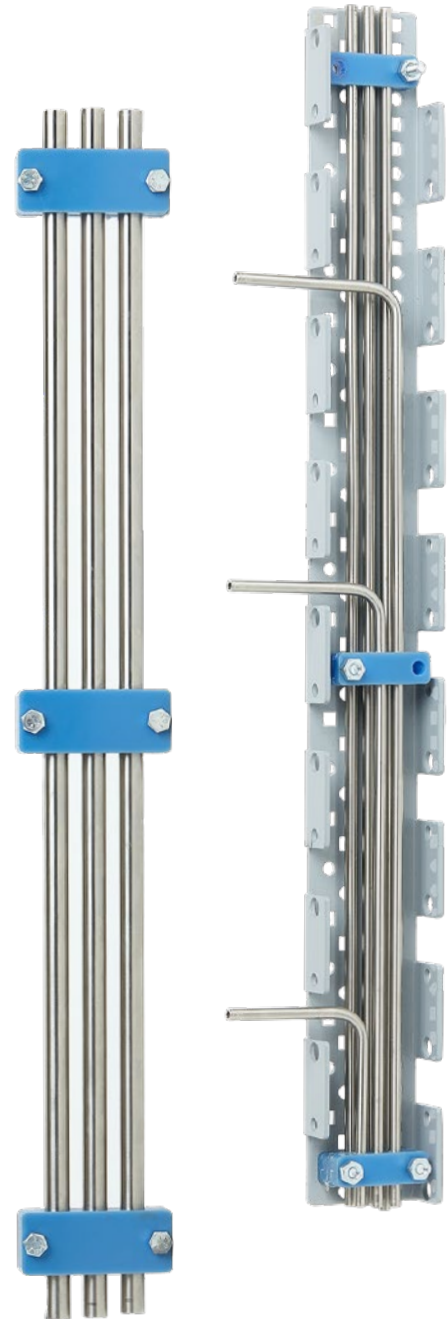
SpaceClip

Simple, stress-free tubing management for any application.

Tubing installation is time consuming and expensive. Save time and save space with SpaceClip™, the simple to use, clip on tube spacing and support system. SpaceClip serves as an extra set of hands during installation by keeping tubes in place and evenly spaced. Once fully installed, SpaceClip is a permanent durable anchor that minimizes vibration and maximizes the longevity of your installation. SpaceClip allows for simple removal and reinstallation of your tubing during service, and can be stacked vertically to provide organizational benefits that are out of this world.

Benefits of SpaceClip

- Save Space, Time and Money
- Easy Installation
- Absorbs Vibration
- Maintains Proper Tube Spacing
- Mounts to Any Flat Surface
- Increased Tubing Lifespan



US pat 2019/0323632 A1 | International Patent Pending

Installation

SpaceClip is available for ¼, ⅜, or ½ inch tubing. Custom sizes available upon request.

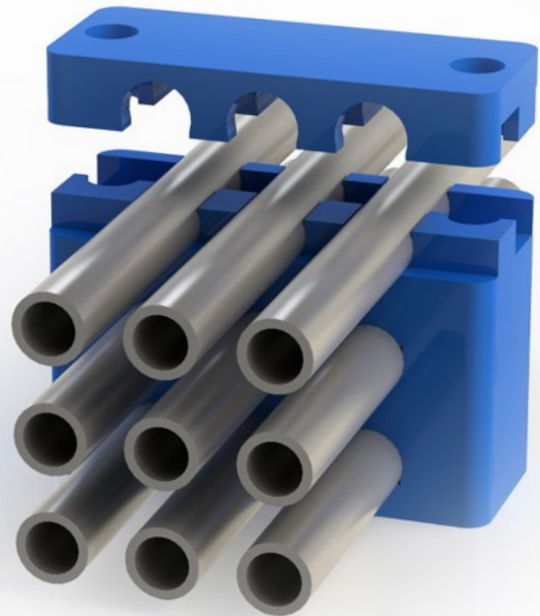
SpaceClip can be used as a permanent clip on spacer without mounting hardware, or to prevent vibration if mounted using ¼" hardware.

SpaceClip is available in up to 12-line configurations and multiple clips can be stacked to condense all tubing into one run.

SpaceTrack™ tubing track, a laser cut, powder-coated mounting system compatible with SpaceClip is available.

Material: Nylon
(other materials upon request)

Temperature Rating: -20° – 260°F



SpaceClip Part Breakdown

SpaceClip - (S) - (#) - (B)

1. (S) Tubing Size

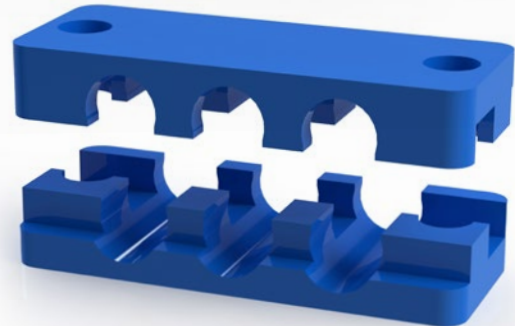
- 4 - 0.25 in.
- 6 - 0.375 in.
- 8 - 0.50 in.

2. (#) Number of Tubes

- 1 - 6, 8, 10, 12

3. (B) Number of Bolts

- NB** - No Bolts
- 1B** - 1 Bolt
- 2B** - 2 Bolts



SINCE 1922, AND NOW FOUR GENERATIONS OF FAMILY, SLOAN LUBRICATION SYSTEMS HAS BEEN THE LUBRICATION SOLUTION FOR RECIPROCATING AND ROTARY EQUIPMENT. WE INSPECT, INSTALL, TEST, TRAIN, AND MAINTAIN YOUR COMPONENTS TO ENSURE OPTIMAL PERFORMANCE FOR YEARS TO COME.